

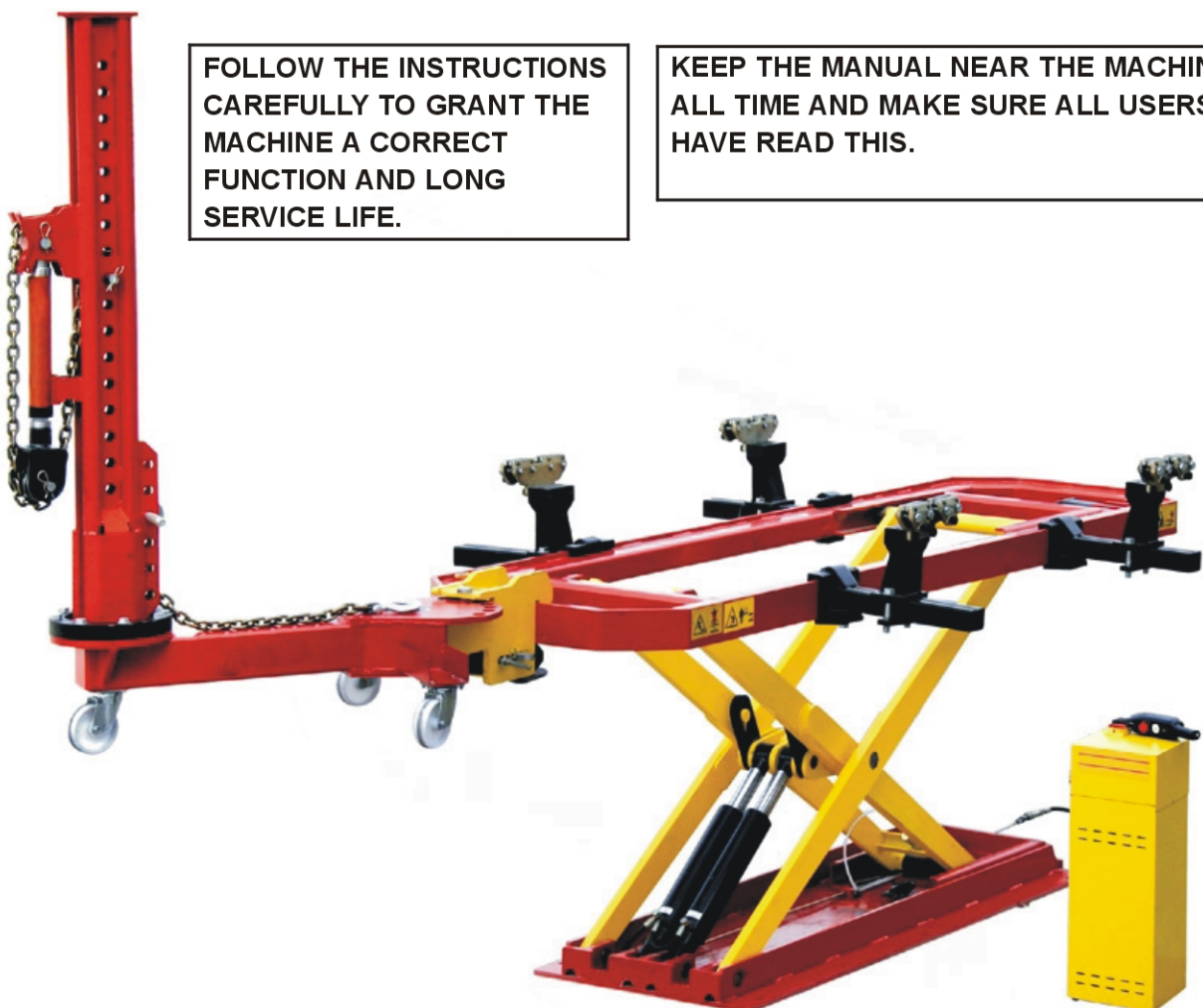
# AUTO COLLISION REPAIR EQUIPMENT

**EE-CRT900B**

## **USER MANUAL**

**FOLLOW THE INSTRUCTIONS  
CAREFULLY TO GRANT THE  
MACHINE A CORRECT  
FUNCTION AND LONG  
SERVICE LIFE.**

**KEEP THE MANUAL NEAR THE MACHINE  
ALL TIME AND MAKE SURE ALL USERS  
HAVE READ THIS.**



## **PREFACE**

We offer our heartfelt congratulations on your choosing Universal Collision Repair Equipment CRT-900B your wise choice would bring best value reward for your enterprise.

CRT-900B is the advanced new generation frame style Universal Collision Repair Equipment that our company imports from Europe.

Such Universal Collision Repair Equipment could drive on the frame directly, and it need not ramp, It is simple and convenient for the car to drive on the frame., single pulling tower, pulling force strong; make use of the Europe new style universal clamp, it suitable for various kind of vehicle style, could could meet the requirement of extensive clients. Such equipment under the condition of rated load and stretching situation, the noise of hydraulic system would not exceed 70 dB, it is almost noiseless. CRT-900B Universal Collision Repair Equipment would enhance your enterprise efficiency and level of sheet metal greatly, lower the work strength of worker, enhance your enterprise competitiveness and fame popularity, and create highly economic benefit for you. Purchase CRT-900B Universal Collision Repair Equipment, you would get the perfect technical training and service. “The First Thing Is Reputation, The Supreme One Is User” is always the soul of our company.

This manual contains CRT-900B Universal Collision Repair Equipment’s structure, operation, safety and maintenance. Before operating, please read this manual carefully. This could help you operate it correctly and high efficiently, receive the effect of a stitch in time saves nine. We shall be only too pleased to receive your problems that arise during the operation process, your requirement and suggestion, so that we could provide the perfect service for you.

## Content

<b>Product main specifications.....</b>	<b>4</b>
<b>一、 Accessories of Universal Collision Repair Equipment and brief introduction of function .....</b>	<b>4</b>
<b>(一)、 Working Platform.....</b>	<b>5</b>
<b>(二)、 Pulling Device.....</b>	<b>9</b>
<b>(三)、 Support frame .....</b>	<b>10</b>
<b>(四)、 clamp.....</b>	<b>11</b>
<b>(五)、 Electric control box.....</b>	<b>11</b>
<b>二、 Operation Steps.....</b>	<b>12</b>
<b>(一)、 Preparation before Vehicle Loading.....</b>	<b>12</b>
<b>(二)、 Vehicle Loading and Clamping.....</b>	<b>13</b>
<b>(三) Straightening operation.....</b>	<b>14</b>
<b>三、 CRT-900B Universal collision repair system Safety operation and maintenance... </b>	<b>15</b>
<b>四、 CRT-900B Universal Collision Repair Equipment Operation Regulations.....</b>	<b>16</b>
<b>五、 The hydraulic pressure system common problems and solutions.....</b>	<b>19</b>
<b>六、 Equipment hosting and carry method .....</b>	<b>21</b>
<b>七、 Electrical equipment practical environment and running condition.....</b>	<b>22</b>
<b>Spare part lsit .....</b>	<b>24</b>

## Product main specifications:

Product Series No.: CRT-900B

The length of working platform: 3230mm

The width of working platform: 880mm

The height of working platform: 140~1400mm

Working platform maximum load bearing: 2500kg

The total weight of equipment: 1300kg

Oil cylinder push power: 10t

Pulling equipment maximum working pressure: 69MPa

Air supply press requirement: 100PSI

Power supply 380V 50/60HZ

factory number:

## (一) Accessories of Universal Collision Repair Equipment and brief introduction of function

Universal Collision Repair Equipment CRT-900B mainly consists of such 2 parts as working platform, pulling tower illustrated in diagram 1:

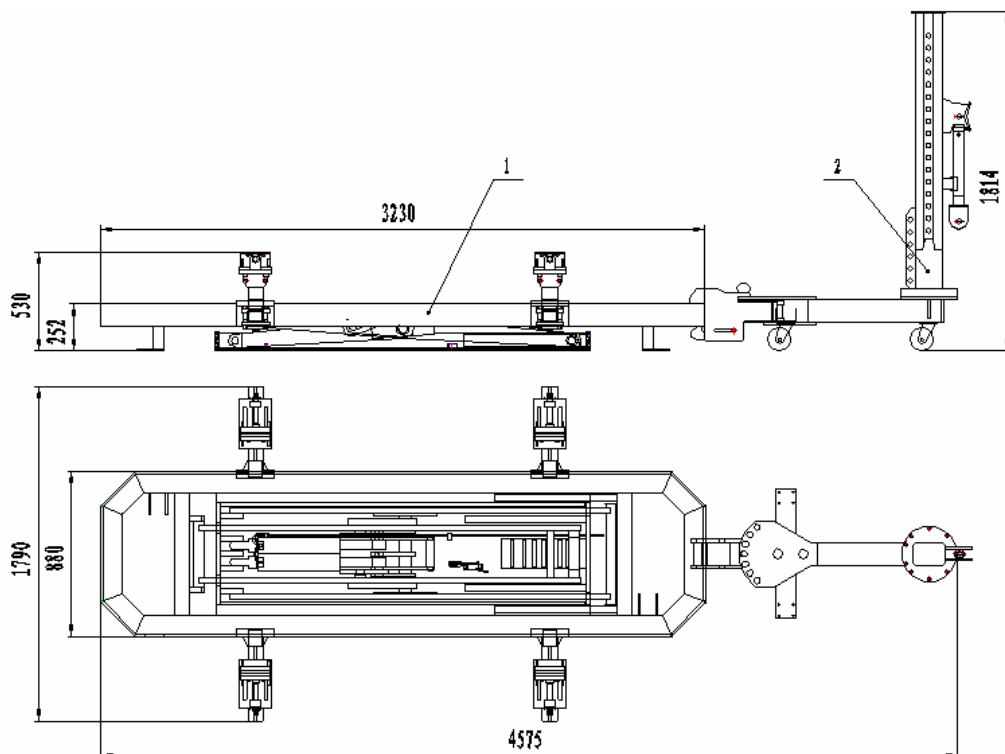


Diagram 1 Universal Collision Repair Equipment CRT-900B

1. working platform      2. pulling device

(一)、Working Platform

Working platform is the basic part of Universal Collision Repair Equipment which consists of 4 parts, it include working platform rack, clamps, working platform lifting frame and support leg, illustrated in diagram 2:

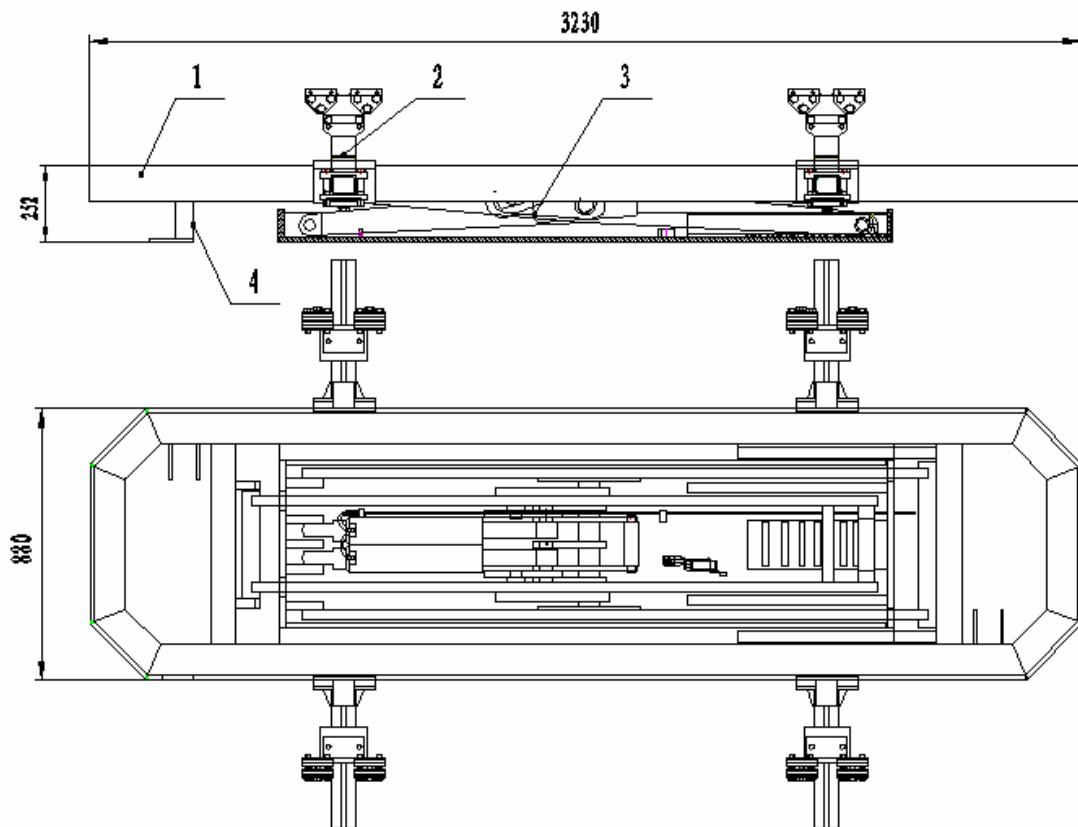


Diagram 2 CRT-900B Working Platform

1、working platform rack 2、clamps 3、working platform lifting frame 4、support leg

### 1、Working platform rack

Working platform rack is a frame-type structure welded from square tube and steel plate. Square tube and steel plate form into a circular guide rail, clamps and pulling equipment could be mounted on working platform rack. Among them, two pieces of square tubes is welded and used as the reinforcement, two supports are welded on the square tube at the left end to fix inner lift arm, the left side of square tube in right end welded two pieces of guide rails so that to support the trolley of the outside lift arm. The structure diagram is illustrated in diagram 3.

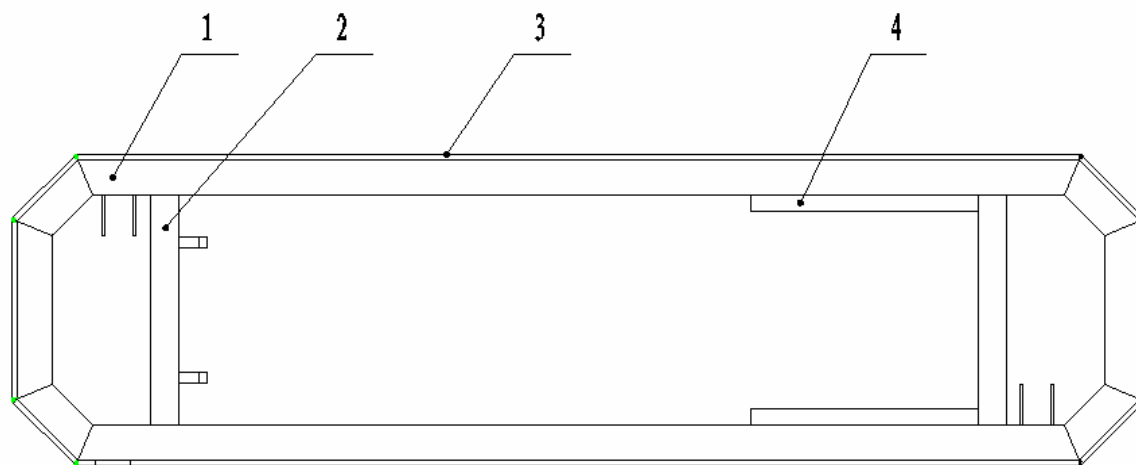


Diagram 3 Working Platform

1、square tube 2、square tube reinforcement rib 3、steel plate 4、guide rail

### 2、Clamps Device

Clamps device are illustrated as in diagram 4 and mainly used to grip the undamaged skirt panel of car in order to fix car. Clamps can be equip at working rack from any part of working platform, and can be moved longitudinally along the edge of working platform, it is locked tightly with bolt at any longitudinal part of working platform. Clamps is attach to the cross arm of clamp base with press plate and bolt and can be adjustable along the width direction of car. Car side and clamps can be simultaneously gripped by screwing tightly the bolt on clamps.

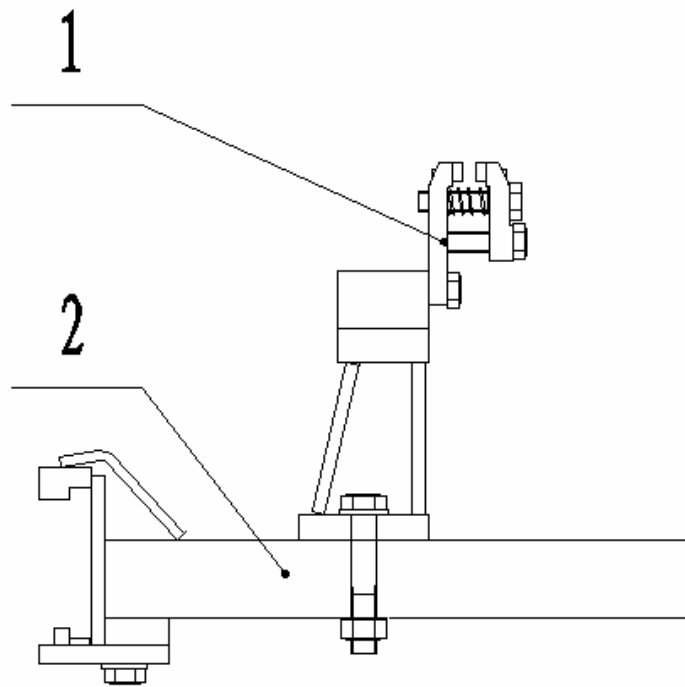


Diagram 4 Clamp Device

1、 clamp      2、 clamp base

### 3. Lifting frame

Lifting frame is used to lift the car to some height, so that the four wheel of vehicle could fall to the support frame.

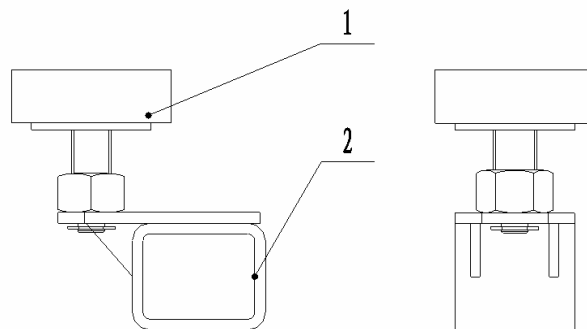


Diagram 5 lifting frame

1.rubber pad    2.frame seat

### 4、 Working Platform Lifting Frame

Working platform lift shelf is a scissor-type lift structure, it can lift the working platform vertically with lift scope of 140~1400mm, vehicle can drive on the frame and repaired at a lower height and can be measured at a higher height, it is very convenient and practicable. The rated lift capacity is 2000kg. Lifting frame is equipped with dual safety device of mechanical self-lock and hydraulic self-lock to ensure a safe operation.

(1) Working platform lifting frame:

Working platform lifting frame consists of outer lift arm, inner lift arm, oscillating frame, oil cylinder, self-lock device, electric hydraulic pump, air cylinder, speed control valve and etc which is illustrated as in diagram 6.

(2) Chassis :

Chassis is a part of lift structure of working platform lifting frame, more attention should be paid that the ground area which chassis is placed should be leveled with error of plane degree not more than 3mm to avoid chassis deformation. **Attention: the chassis must be fixed on the ground by the anchor bolt, in order to avoid the turn over of the auto collision repair system to hurt person!**

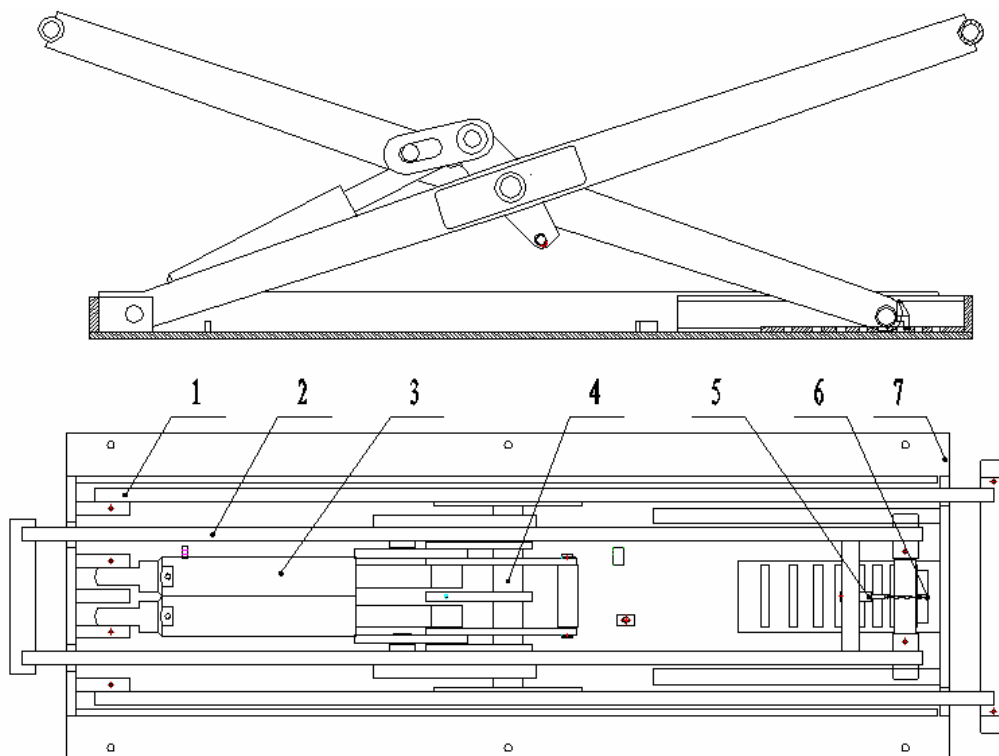


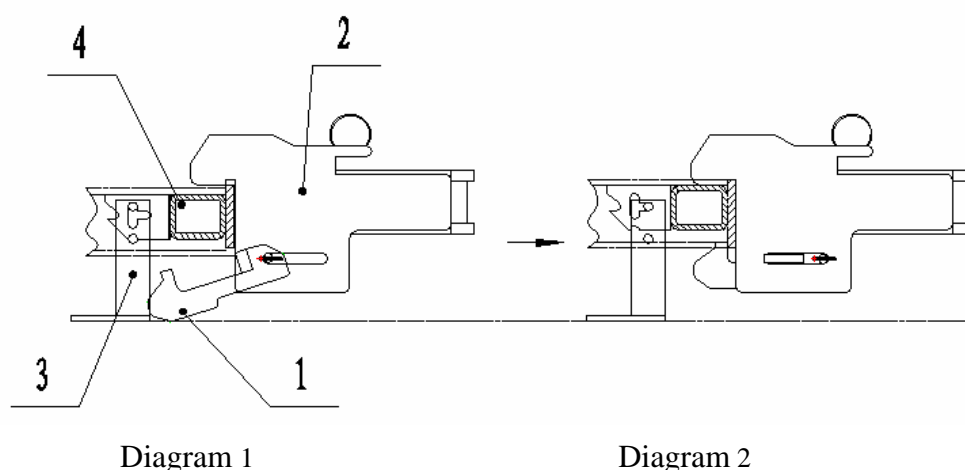
Diagram 6 working platform lifting frame



1. outer lift arm    2. inner lift arm    3. oil cylinder    4. oscillating shelf
5. air cylinder    6. self-lock device    7. chassis

## (二)、Pulling Device

Pulling device is illustrated as in diagram 7. Pulling device can be locked tightly at any position around working platform with hook head and wedge block. The way of locking shown as follows.



At first, making the two legs 3 of the bench fall on the same position just shown in Diagram 1, the hook 1 of the pulling tower fall on the ground, pushing the pulling tower onto the working platform, and then press the “up” button of the remote control to make the working platform rising, the leg should be fall on the position as Diagram 2 shown., here the connector 2 of the pulling tower fasten at the edge of the working platform, then make the hook 1 to catch the underlying edge of the working platform, and wedge tightly by the wedge block.

After it is locked at some position around working platform, cross beam 5 and pulling arm 6 can be rotated within horizontal plane, and fixed with pin 3 after rotated to the wanted position. Pulling arm 6 can adjusts its direction automatically in accordance with the pulling direction. The max. working push of hydraulic cylinder 7 is 10t, its working power is given by air pump or manual oil pump.

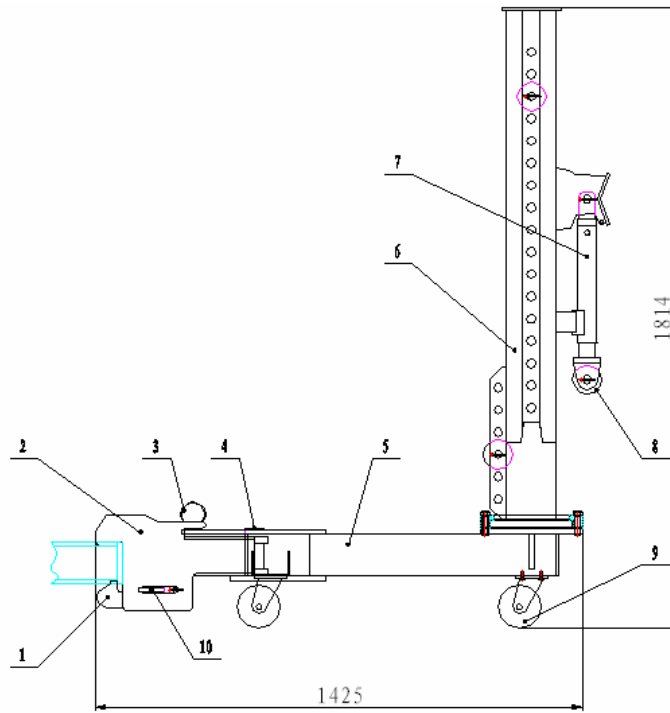


Diagram 7 Pulling Device

- 1、hook head    2、connector    3、pin    4、pin shaft    5、cross beam  
 6、pulling arm    7、hydraulic cylinder    8、idle wheel    9、castor    10、wedge block

### (三)、Support frame

Support frame is used to support the vehicle four wheels, so that could clamp vehicle skirt panel. Show as follow diagram:

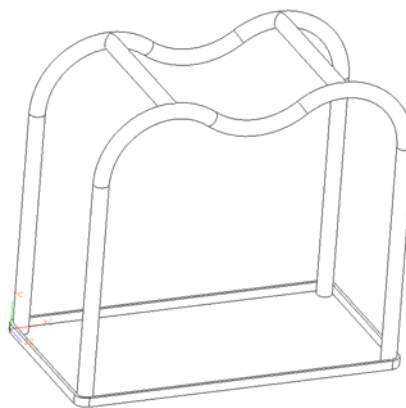


Diagram 8 support frame

#### (四)、clamp

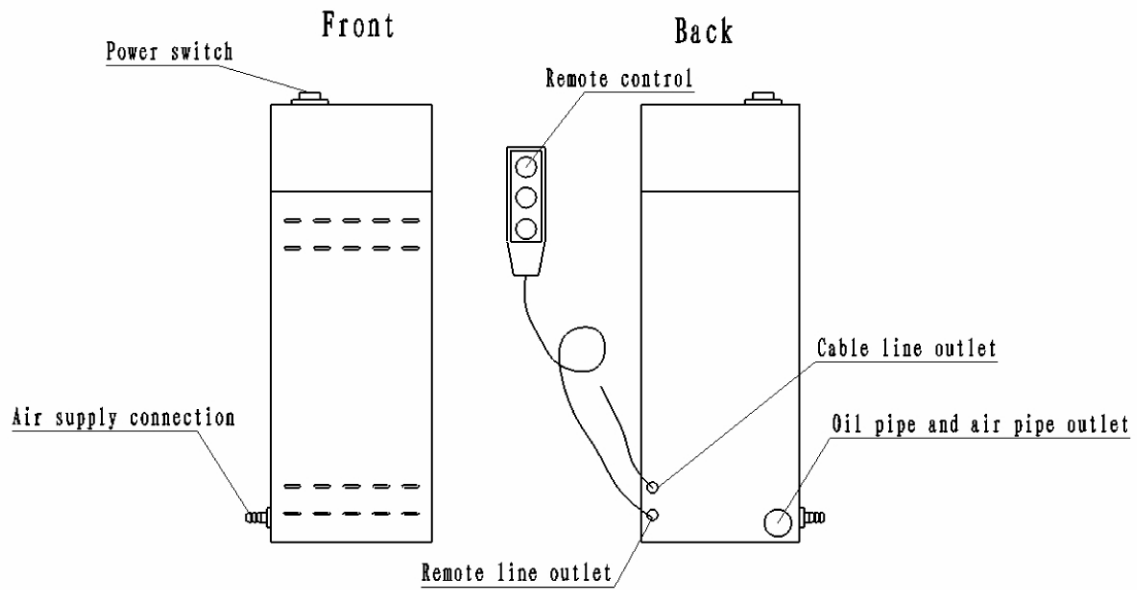
Clamp refer to the tool that clamp the damage part, according to the different damage part. The clamp has different kind style, its usage is flexible. CRT-900B supply several kind of clamp, could meet different need of maintain. It should obey the principle of clamp convenient, safety reliable, no-damage component. The follow list is the accessory clamp pulling force limited list, it shouldn't exceed the limited pulling force scope when use it.

#### **Universal Collision Repair Equipment**

No.	Name	Series No.& Spec	Able to work under Max pulling force
1	Multidirectional pulling plate	01	Pulling force and the jaw at the same driection 4 ton
			Vertical direction 3 ton
2	Heavy clam	05	6 ton
3	Narrow clamp	07	5 ton
4	Chain	3 meter with draw hook	10 ton
5	C clamp	M2	5 ton
6	G clamp	M3	5 ton

#### (五)、Electric control box

Electric control box is used to control the rise and drop of main lifting frame, its outside structure show as follow diagram:



## 二、 Operation Steps

CRT900B has the following repair steps when straighten the damaged car:

### (一)、 Preparation before Vehicle Loading

1. Ascertaining the straightening project. According the status of vehicles' damage, ascertain the pulled part, direction and the part to be protected during the pulling process. If necessary, some parts shall be taken down and cleaned, for example, the battery shall be taken down.

2. Ascertaining the chassis data and the body data suitable for the damaged vehicles. The detailed check way as follows:

1)、 Ascertain the damaged vehicle's category, model, manufacturer, and produced age, etc. And according these you can find the vehicle's No. from the data and vehicle body's data catalogue.

2)、 According the vehicle's No., you can find the respective chassis data and vehicle's body data.

## (二)、Vehicle Loading and Clamping

### 1、Loading and grip of damaged car at front or rear part

(1) Dismount clamps from working platform, lower the working platform to the lowest position, moving the repairing car to the upside of the working platform, making it stop at the middle place of the working platform.

(2) Equipping the four clamps base on both side of the working platform respectively, installing the four lift shelf with rubber pad on the clamp base, and aim at the lifting position of the car chassis, and then press the “up” button of the remote control, lifting the working platform, when the height above 500mm, loosen the button of the remote control, and lock tightly the mechanical self-lock on platform lift shelf, putting the four stools under the four wheels, press the “down” button of the remote control, making the working platform descend, and the wheel fall on the stool, the working platform go on descending to the lowest position, taking off four lifting shelf.

(3) Equipping the two pairs of clamps onto the clamp bases separately, set the distance between the two clamps on the same side in accordance with one given in data form, generally, the distance between the two clamps and the two ends of working platform should be approximately the same. If the car is longer than 4m, in order to mount the damaged edge within working platform plane, may move the two clamps to one end simultaneously. Adjust the distance between the corresponding clamps on both sides in accordance with the edge distance measured, that means the distance between the clamps open on the outer side of the two clamps is the same as or a little more than the edge distance with the clamp open of 10mm or so.

(4) Press the “up” button on remote controller to lift working platform to a proper height, grip car edge with clamps, lift working platform together with car after grip, unbutton the remote control when the four car wheels are away from the stool, lock tightly the mechanical self-lock on platform lift shelf, remove the four short stools.

(5) Press “down” button of remote control, down the platform to the just height that the leg falls on the ground, equipping the pulling tower onto the platform, have the hook head hooked to the lower edge of platform and wedge tightly with wedge block.

### 2. Loading and Grip of Damaged Car at One Side

Loading and grip of damaged car at one side is basically the same as the previous case.

The difference is the edge on damaged side can not grip (heavy damaged) or can only grip one clamp in case of one side damage, the damaged side should be dressed, when the edge on damaged side is basically well dressed, it may be gripped with clamp, then pull and dress the other damaged part.

### 3. Loading and grip of without edge

For the car to be repaired with on edge, may weld two pairs of symmetric steel plate at the proper place on car chassis, grip them after loading.

During car loading, attention should be paid that to move car with car length over 4m longitudinally along platform on base of the damaged part, place the damaged part within platform plane for repair and measuring.

## **(三) Straightening operation**

### 1. Connection between Pulling Device and Platform

Disengage the wedge block of hook head on pulling device to separate the hook head from platform lower edge. Determine the proper joint between pulling device and platform in accordance with the damaged part, the basic principle to determine the joint is: connection location between pulling device and platform should be changed as little as possible aimed at repair during repair; the chain and oil cylinder should be paralleled as possible as it can to avoid the damage at pull post during pull. After connection location is selected, pulling device is pushed under platform, hook head is locked at the lower edge of platform with wedge block, pulling device is locked together with platform.

### 2. Preparation before straightening

Before straightening, accumulator battery on car should be dismantled to prevent acid material from leakage to cause corrosion to other accessories; a correct and fix connection between pulling device and platform should be guaranteed; there should not be person behind pulling arm; connection between chain and repair position should be fastened; oil cylinder pulling chain and hose should be ensured intact and undamaged; oil volume in manual pump should be guaranteed; connection among hose, pump and oil cylinder should be ensured; on air should be ensured in hydraulic system. The following is operation steps of discharge of air from hydraulic system:

(1) Oil cylinder is correctly connected with pump.

(2)The ventilation cork of air pump is screwed and loosened.

(3)Pump is lifted away from ground about 1.5~2m to make oil cylinder extended and withdrawn for several times with on load, thus air in oil cylinder will be discharged from oil reservoir of pump.

Before operation, an approximate measuring should be done on the damaged part with measuring tools in accordance and comparison with data to judge the damage extent and make preparation on repair.

### **三、 CRT-900B Universal collision repair system    Safety operation and maintenance**

#### **(一)Safety operation item:**

Safety operation could avoid personal and equipment damage, our company isn't responsible for the damage and loss that caused by unsafe operation, lack of maintenance or incorrect operation of equipment, the follow security item as follow when operation:

1. Before using the Universal Collision Repair Equipment you must read the operation manual and spare parts operation manual carefully. The equipment should be operated by the worker with proficiency training. The equipment must be used in indoor.

**2.The chassis must be fixed on the ground by the anchor bolt before using, in order to avoid the turn over of the auto collision repair system to hurt person!**

3. Before using you shall check the performance of the cylinder, oil pipe, air hydraulic pump of the lifting frame hydraulic system. You shall make sure their performance good. And you shall check the performance of the cylinder, oil pipe, Manual pump of the pulling system, ensure the performance well of each component. The oil pump and air pipe between of electric pump and     equipment must add protecting pipe for sleeve.

4. The air supply pressure of assorted electric pump and pneumatically powered hydraulic pump could not beyond 0.8 Mpa.

5. When the working platform rise and stop at some position , must make the ratch of self-lock equipment to support the fixed rack effectively, it should not connect with air supply at this time, when the working platform would drop, it had to connect with air supply, and make the self-lock device separate from rack.

6. Before the lifting frame drop, the self-lock equipment should be disconnect
7. The connection between of the pulling equipment and working platform must be secure and reliable, it should be check before pull each time.
8. The chain should be check before pull in order to ensure the chain in good condition.
9. Before pull, the clamp must clamp the vehicle tightly.
10. The connection between of chain, clamp, and clamping position must reliable. The chain could not be used to hoist heavy object.
11. During the process of straightening, **forbid anyone stand in front of the pillar and the force direction of chain**, in order to ensure safety.

## **(二)、Maintenance Item**

1. After finishing your work, you shall clean up the dust. And you shall put away the clamps and measuring elements.
2. The hydraulic oil in the cylinder, air hydraulic pump and electric pump shall be replaced every half a year. For the operation ways you can read the manual books.

## **四、CRT-900B Universal Collision Repair Equipment Operation Regulations**

(一)、Must wear the work clothes、glove when come into the sheet metal operation area, disallow to wear babooshes or high-heel shoes.

(二)、Equipment operation environment illuminate should not under 500LX, the temperature range  $-30^{\circ}\text{C} \sim +40^{\circ}\text{C}$ 。If exceed the temperature, it should equip the ventilating device or heating furnace according to the situation.

(三)、Equipment could not make use overload, or else would cause the invalidation of the equipment or staff injure.

(四)、Check work before operate the equipment

1. Should clear up the work area before operate the equipment, forbid pile up anything around the working platform, in order to avoid workers lip and stumble, and cause fire and explosion, to cause workers injured.
2. Clean up the oil gas pipeline, avoid pressing the pipeline when operate. Check the adaptor of pipeline whether connect well, if there is breakage in the pipeline, it should be changed



immediately if there is breakage, and forbid use again.

3. Check the oil pump, change the hydraulic pressure oil when it work every three months (four hours /day), spill all the used oil, clean up the dunghill of the reservoir, fill with the Mobil No. 24 25 or Great Wall No. 46 etc. high quality hydraulic pressure oil.
4. Supply the air of the air hydraulic pump should be **no-dust, no-water. Must connect the oil-water separator on the air line**, change the sieve core every three month. Air pressure scope is 0.6-0.8MPa, Firstly eliminate all the seeper before use it every time.
5. Air supply must add separate switch, the switch should indicate clearly, such switch should lock up, and could unloading after cut off the energy.

#### **(五)、 Drive on or off the vehicle operation rulers**

1. During the working platform rise and drop, forbidden to stand around the equipment, the distance between the operated air pump and the working platform should be more than 0.5m. Except with the mechanism self lock, don't stand on the upside or underside of the working platform only depend on the support of hydraulic pressure.
2. The operation of working platform rise and drop should be stable, it is better operation slowly, in order to avoid the shock that cause by the working platform drop when release pressure to fast, to damage the equipment and vehicle.
3. When rise and drop the working platform, the tower pillar should bed fixed at another end of working platform with the wedge iron fix, in order to avoid move.
4. The vehicle stop at the appointed position, stop at park/neutral place.
5. Forbid worker carry in the maintain operation under the platform.
6. When the platform rise, forbid non-operational worker manipulate the pneumatic pump, avoid mistaken operate cause worker injure.

#### **(六)、 Vehicle fix operated rules**

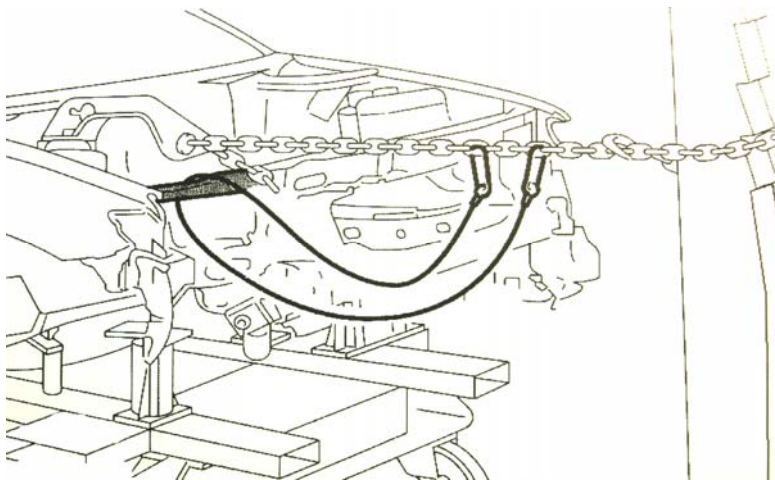
1. Check the clamp mouth, without the oil dust before clamp the vehicle.
2. Check all the clamp part whether distortion and crack or not, if it have, should be changed. Avoid fracture under force and fly off to injure people.
3. Main clamp fix bolt \ the clamp mouth, fix the bolt tightly, it should be screw down.

#### **(七)、 The Measure Device Operated Rules**

1. The measuring tool should put up or down lightly, do not collide, prevent it mangling.
2. The eyes should parallel with the reading mark, reduce the reading tolerance.
3. The measuring tools should take back the original place of tool cart after finish measure.
4. Don't screw down with stronger force when the connect bolts of the measuring tools loose.

### (八)、Stretch operate rule

1. Check the chain、 sheet metal tool ,pulling Ring whether completely good、 if there is breakage and rift in pulling ring, make sure it is right, then used it.
2. Check the chain direction、 lock mechanism, chain can't distortion , all the chains should be on the same line direction.
3. When pulling, it must add safety rope on the chain, connect the safety rope with the solid element of the vehicle chassis, avoid the slipping of clamp, chain collapse break, fly off to injure people.



4. The pulling force do not exceed the rating load of the tool, the rating load of the tool is 5 ton, the chain shorten tool rating load is 8 ton, the chain hook rating load is 10 ton.
5. Don't whack the sheet metal tools and the chain when pulling.
6. **Wedge the wedge iron tightly** of the pulling tower before pulling.
7. Never be at the same line direction between the worker and the chain force direction when pulling.
8. Put the heavy goods on the chain when pulling, to avoid mistake operation and the chain fly off to injure the worker and equipment.

9. Fix the vehicle spindle on the working platform by the chain on the reverse side of the pulling force, when the pulling force is stronger.
10. Clean up the working area after operation. The sheet metal tools 、 the measuring tools、 the clamps should be clean then put back the tool cart neatly.

### (九)、 Equipment maintenance operation rules

1. When pneumatic pump (manual pump) and oil cylinder are not work, **must screw on the dust cap of the quick coupling quickly, avoid the entrance of dirt**, avoid the invalidation of the pump, oil cylinder etc.
3. When the hydraulic pressure system appear any problem, don't disassemble it for repair by yourself, avoid to attain or lost the components and then could not repair, **Never adjust the relief valve by yourself**.

## 五、 The hydraulic pressure system common problems and solutions

### 1. Hydraulic cylinder plunger leaks oil:

Change the cylinder inside seals, if change it, still leaks seriously, it indicate the plunger fray seriously, need change the plunger, should mail to our company repair.

### 2. Hydraulic cylinder coupler leaks oil:

Screw off the adaptor and quick coupling, wrap the airproof belt, then screw tighten again, if still leaks seriously, need change the adaptor.

### 3. Hydraulic pump oil pump adaptor leaks oil:

The solution is same as above.

### 4. Hydraulic oil pipe leaks oil:

If two adaptor position leak oil, the solution is same as above, if the pipe have damaged , need to change it, strictly prohibit re-used.

### 5. Oil cylinder plunger could not extensionto the place:

Check the oil capacity, supplement hydraulic oil.

### 6. Hydraulic cylinder could not retract

Air block phenomenon, the cylinder have air.

- (1) Press again and again, release pressure many times, place the pump on the higher than cylinder, let air return oil box.

(2) Use the jack replace cylinder to support, screw down the cylinder adaptor, let the plunger recur, oil, air will push out, then screw up the couplers, assemble pipe, press again and again, release pressure many times.

(3) Quick coupling may not screw tighten, two couplers and the unilateralism value have gap, return flow restricted.

7. Lifting, pulling force less than full force

(1) Check the air pressure whether below 0.6MPa or not,

(2) Check the air, oil pipe couplers whether leak out or not,

(3) Check the pump whether block or not,

(4) The relief valve of hydraulic pump return flow don't close down completely, have the dirty blocked, please mail to our company repair.

8. Press on the hydraulic treadle, it doesn't work.

(1) Air channel isn't open.

(2) Control valve damage

(3) Much water, dirty in pump, lead to air plunger can't work, need to mail our company repair.

9. without pressure after press on pump treadle

(1) Oil-in blank off and oil couldn't enter

(2) Oil-in check valve, overflow valve blank off, damage, please mail to our company for repair.

10. Do not keep pressure:

(1) Oil pipe leaks oil

(2) The pump inside check valve blank off or damage, please mail to our company for repair.

11. Leak oil below the pump treadle

Replace the airproof pillow.

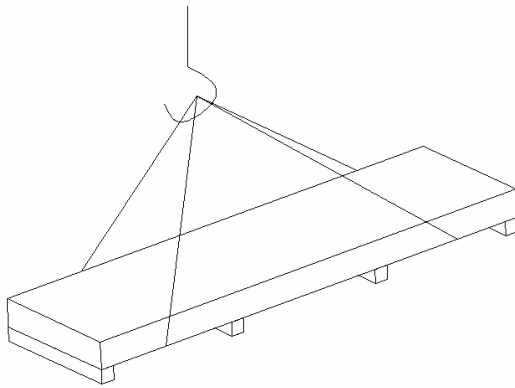
12. If the damaged parts in the pump, please mail to our company for repair. Do not disassemble for repair by yourself, avoid to attain or lost the components, can't repair. The client disassemble for repair, lost, damage the part of oil pump, oil cylinder, our company has no responsible for maintenance or receive all the cost for purchase the new

component.

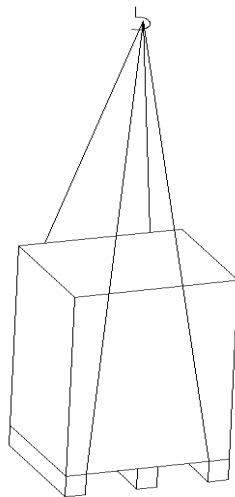
## 六、Equipment hosting and carry method

CRT-900B each component is packed with wooden case, there are four cases, the way of hoist as follows:

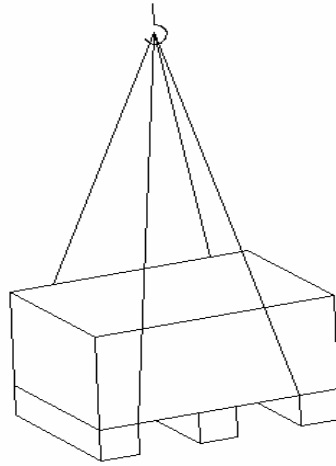
1、 The hoist way of working platform wooden case show as follows:



2、 The hoist way of tower pillar wooden case and crossbeam wooden case show as follows:



3、 The hoist way of electric control box show as follows:



## 七、Electrical equipment practical environment and running condition

1、electrical equipment shall be designed to operate correctly with the conditions of the supply:

**Voltage:** Steady state voltage: 0,9 to 1,1 of nominal voltage

**Frequency:** 0,99 to 1,01 of nominal frequency continuously;

**Harmonics:** Harmonic distortion not exceeding 10 % of the total r.m.s.

voltage between live conductors for the sum of the 2nd through to the 5th harmonic.

**Voltage unbalance:** Neither the voltage of the negative sequence component nor the voltage of the zero sequence component in three-phase supplies exceeding 2 % of the positive sequence component.

**Voltage interruption:** Supply interrupted or at zero voltage for not more than 3 ms at any random time in the supply cycle with more than 1 s between successive interruptions.

**Voltage dips** Voltage dips not exceeding 20 % of the peak voltage of the supply for more than one cycle with more than 1 s between successive dips.

2. The equipment shall not generate electromagnetic disturbances above levels that are appropriate for its intended operating environment. In addition, the equipment shall have a level of immunity to electromagnetic disturbances so that it can function in its intended environment.

3. Electrical equipment shall be capable of operating correctly in the intended ambient air temperature. The minimum requirement for all electrical equipment is correct operation between air temperatures of +5 °C and +40 °C.

4. The electrical equipment shall be capable of operating correctly when the relative humidity

does not exceed 50 % at a maximum temperature of +40 °C. Higher relative humidities are permitted at lower temperatures (for example 90 % at 20 °C). Harmful effects of occasional condensation shall be avoided by design of the equipment or, where necessary, by additional measures (for example built-in heaters, air conditioners, drain holes).

5. Electrical equipment shall be capable of operating correctly at altitudes up to 1 000 m above mean sea level.
6. Electrical equipment shall be adequately protected against the ingress of solids and liquids.
7. When equipment is subject to radiation (for example microwave, ultraviolet, lasers, X-rays), additional measures shall be taken to avoid malfunctioning of the equipment and accelerated deterioration of the insulation.
8. When there are dangerous such as shock, vibration and mechanical bump in the install place of the equipment, should take the measure (such as far away from vibration source, anti-knock pad) to avoid the undesirable effects
9. Electrical equipment shall be designed to withstand, or suitable precautions shall be taken to protect against, the effects of transportation and storage temperatures within a range of –25 °C to +55 °C and for short periods not exceeding 24 h at up to +70 °C. Suitable means shall be provided to prevent damage from humidity, vibration, and shock.
10. (If maintenance requirement) Remove component, shouldn't continuous disruption the protective grounded circuit of the remain part.
11. The outside cable duct device of the electric box should rigid support, and should separate with the mechanical movement part or contaminate part.
12. Direct active alternating current motor, the current would become overheating because of startup, the startup time should not beyond 6 times per hour.

### **Spare part list**

NO.	Name	NO.& Spec	Quantity	Remark
1	high strength bolt	M16X70	8	
2	high strength bolt	M16X50	4	
3	studs	R015 1A 500V	2	



Important description of Goods Receipt:

Visual inspection all parts, whether there is transportation damage, it not include in contract repairing that the damage made during the transportation.

If there is transportation damage, please inform carrier. Carrier should responsible for the transportation damage, they should pay for maintain and change cost that cause by transportation damage.